



公司简介 Company Profile

宁波东力传动设备有限公司创办于1993年, 主营减速机、电机、齿轮箱、联轴器、制动器等传动设备研发制造与传动控制系统解决方案的提供, 是中国齿轮行业首家A股上市企业——宁波东力股份有限公司旗下全资子公司。经过30多年的发展, 已成为全国传动设备行业龙头企业, 现有江北、杭州湾、湖南常德三个制造基地, 有员工1500余人。

Ningbo Donly Transmission Equipment Co., Ltd. founded in 1993, specializes in the research, development, and manufacturing of transmission equipment, including reducers, motors, gearboxes, couplings, and brakes. It is a wholly-owned subsidiary of Ningbo Donly Group Co., Ltd. and proudly holds the distinction of being the first A-share listed company in China's gear industry. With over 30 years of development, Donly has emerged as a leading enterprise in the national transmission equipment sector. The company operates manufacturing bases in Jiangbei, Hangzhou Bay, and Changde, Hunan, with a workforce over 1,500 employees.

制造基地 Manufacturing Base



江北基地 Jiangbei District Base

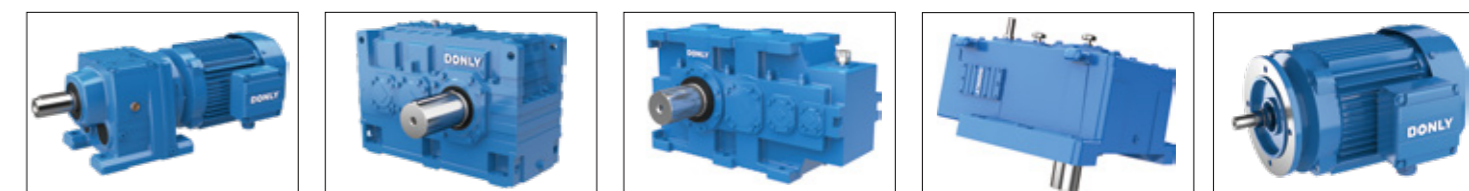


杭州湾基地 Hangzhou Bay Base



湖南基地 Hunan Province Base

DONLY TRANSMISSION

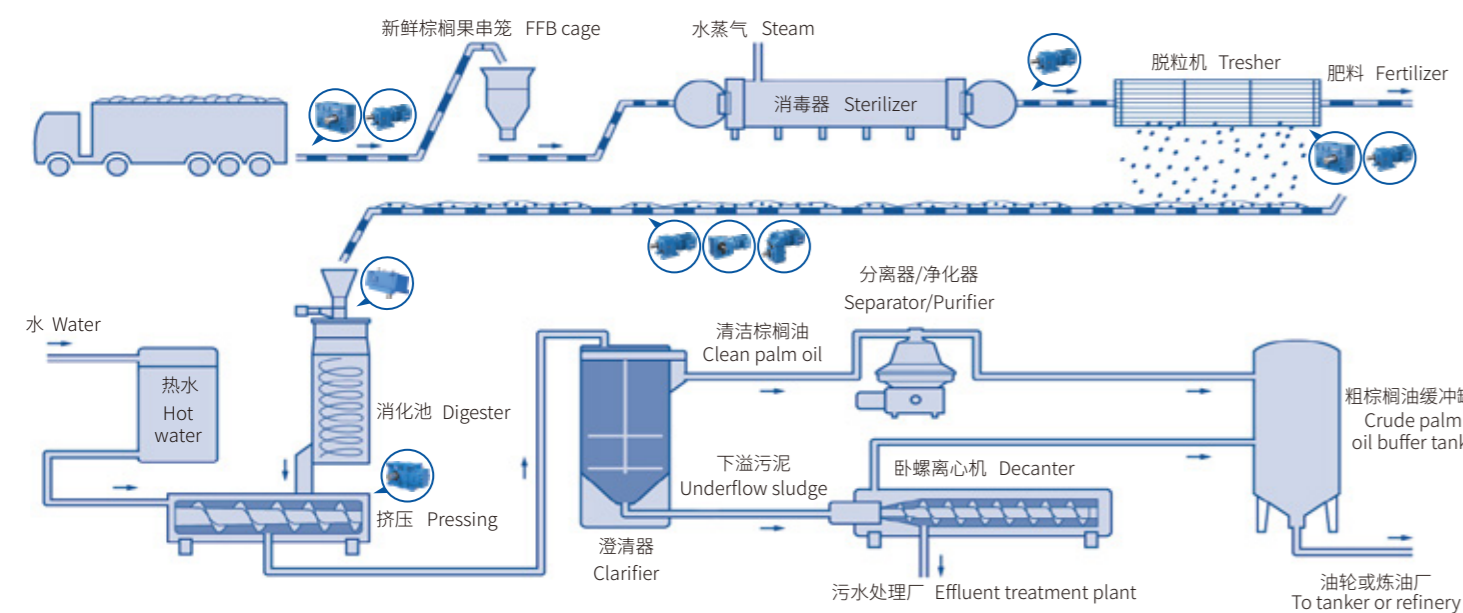


棕榈油行业传动解决方案

Transmission Solutions For The Palm Oil Industry

DONLY
驱动无限可能

棕榈油生产工艺流程 Palm Oil Production Process



宁波东力传动设备有限公司 NINGBO DONLY TRANSMISSION EQUIPMENT CO., LTD.

地址: 宁波市江北区银海路1号
国内业务热线: 400-168-6666
国际业务热线: 0086-574-88398809
国际业务邮箱: frank@donly.com
网址: www.donly.com

Address: No. 1, Yin Hai Road, Jiangbei District, Ningbo City
Domestic Business Hotline: 400-168-6666
International Business Hotline: 0086-574-88398809
Export Department Email: frank@donly.com
Website: www.donly.com



网址 Website



抖音号 Tiktok



微信公众号 WeChat

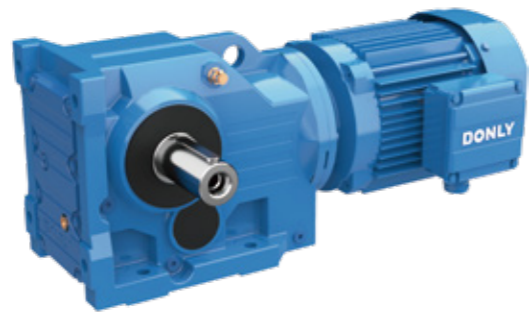


Whatsapp

减速电机系列 Modular Gearmotor Series



DLR系列斜齿轮减速电机
DLR Series Helical Gearmotors



DLK系列斜齿轮-锥齿轮减速电机
DLK Series Helical-Bevel Gearmotors



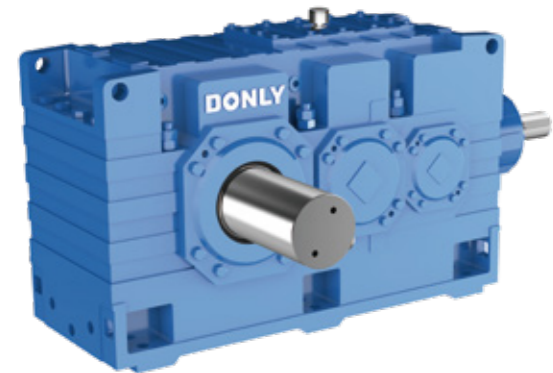
DLF系列平行轴斜齿轮减速电机
DLF Series Parallel-Shaft Helical Gearmotors



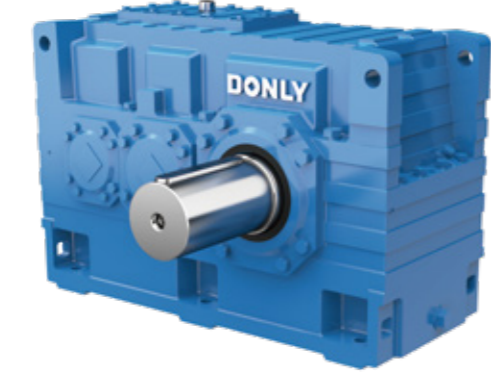
DLS系列斜齿轮-蜗轮蜗杆减速电机
DLS Series Helical-Worm Gearmotors

| 功率范围 Power range | 扭矩范围 Rated torque | 传动级数 Transmission stage | 速比范围 Ratio range |
|------------------|-------------------|-------------------------|------------------|
| 0.12-200kW | up to 50kN.m | 1-6 | 1.4-35000 |

模块化高精减速机系列 Modular Gearbox Series



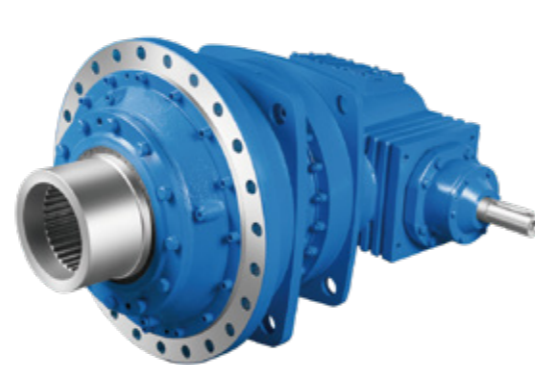
DLB系列直交轴减速机
DLB Series Bevel-Helical Gear Units



DLH系列平行轴减速机
DLH Series Helical Gear Units

| 功率范围 Power range | 扭矩范围 Rated torque | 传动级数 Transmission stage | 速比范围 Ratio range |
|------------------|-------------------|-------------------------|------------------|
| 1.7-10000kW | up to 900kN.m | 1-4 | 1.25-450 |

模块化行星减速机系列 Modular Planetary Gearbox Series



DLP系列行星减速机
DLP Series Planetary Gear Units

| 功率范围 Power range | 扭矩范围 Rated torque | 传动级数 Transmission stage | 速比范围 Ratio range |
|------------------|-------------------|-------------------------|------------------|
| 0.4-10779KW | up to 2600kN.m | 2-5 | 25-4000 |

电机系列 Motor Series



DM系列三相异步电机
DM Series Three Phase Asynchronous Motors

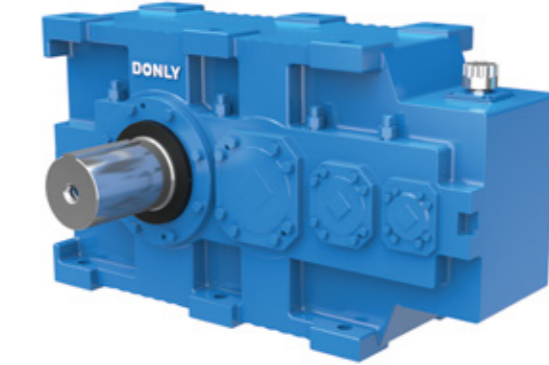
| | |
|-----------------------|------------|
| 功率范围 Power range | 0.25-500KW |
| 额定电压 Rated voltage | 380V |
| 绝缘等级 Insulation level | F |
| 冷却方式 Cooling method | IC411 |



YBK3系列矿用防爆型三相异步电动机
YBK3 Series Flame-Proof Three-Phase Induction Motors For Mining Application

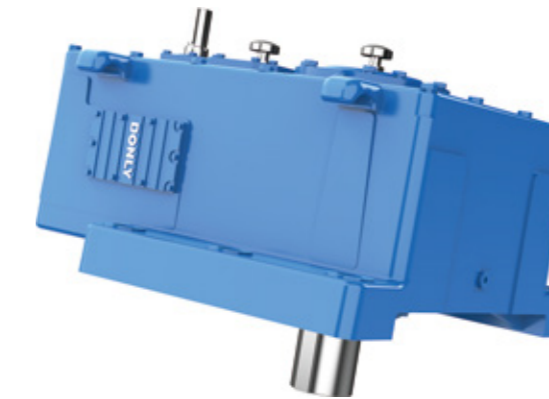
| | |
|-------------------------|-----------------|
| 功率范围 Power range | 0.18-315kW |
| 额定电压 Rated voltage | 380V 660V 1140V |
| 传动级数 Transmission stage | 2 4 6 8 |
| 冷却方式 Cooling method | IC411、IC416 |

棕榈油专用减速机系列 Palm Oil Special Reducer Series



棕榈油压榨专用减速机
Special Gear Units For Palm Oil Pressing

| | |
|-------------------------|---------------|
| 规格 Specification | 50、60、70 |
| 扭矩范围 Rated torque | up to 102kN.m |
| 传动级数 Transmission stage | 3 |
| 速比范围 Ratio range | 20-77 |



棕榈油消化专用减速机
Special Gear Units For Palm Oil Digester Drives

| | |
|-------------------------|--------------|
| 规格 Size | 250 |
| 扭矩范围 Rated torque | up to 26kN.m |
| 传动级数 Transmission stage | 3 |
| 速比范围 Ratio range | 56 |



R系列配IEC电机接口
R Series+IEC Flange

| | |
|-------------------------|--------------|
| 规格 Size | 17-167 |
| 扭矩范围 Rated torque | up to 18kN.m |
| 传动级数 Transmission stage | 1-3 |
| 速比范围 Ratio range | 1.3-291.73 |